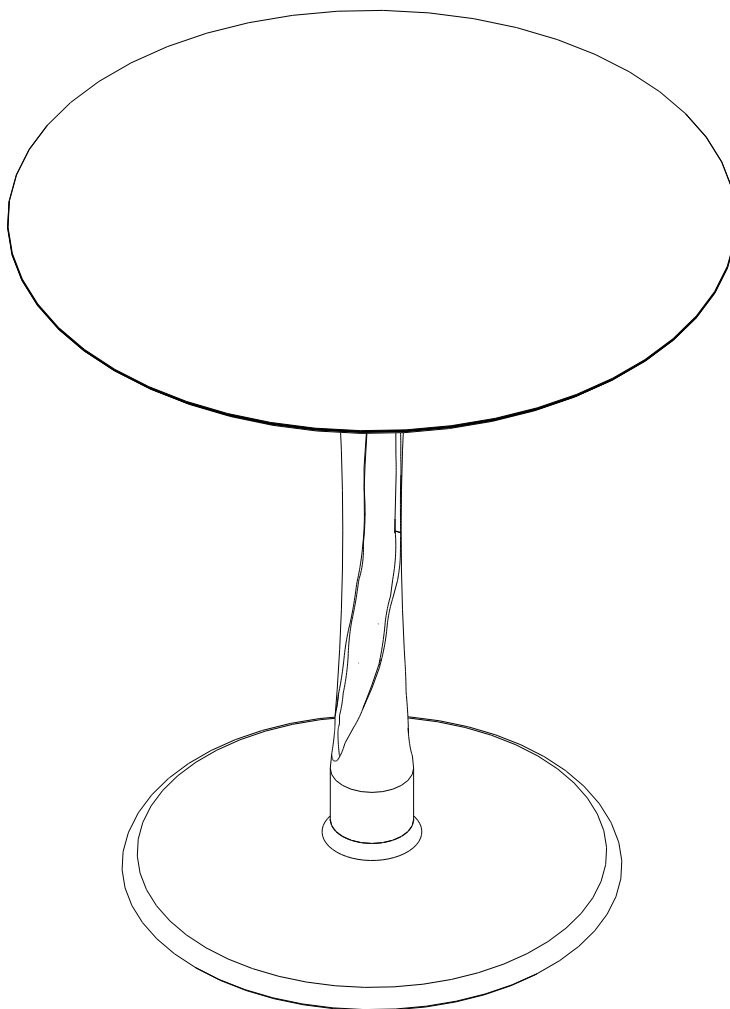


OAK TORSION DINING TABLE Ø70

| CODE | DESCRIPTION |
|-------|---|
| 50011 | OAK TORSION BLACK DINING TABLE 70/70/76 |
| 50017 | OAK TORSION DINING TABLE 70/70/76 |
| 50035 | OAK TORSION DINING TABLE 70/70/69 |
| 50037 | OAK TORSION BLACK DINING TABLE 70/70/69 |

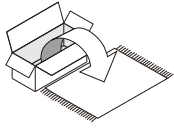


OAK TORSION DINING TABLE Ø70

ASSEMBLY INSTRUCTIONS FOR DINING TABLE INSTALLATION



NOTE



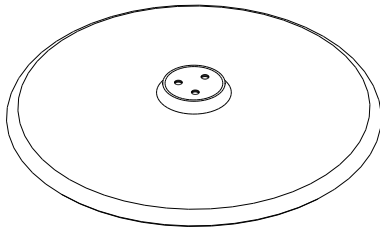
- CAREFULLY OPEN THE CARTON,
- REMOVE CONTENTS AND LAY OUT ON CARPET OR THE PACKAGING CARTON BOX OR OTHER PROTECTIVE SURFACE TO AVOID DAMAGE.
- CHECK PACKAGE CONTENTS TO ASSURE ALL THE NECESSARY HARDWARE AND PARTS ARE RECEIVED UNDAMAGED.
- DO NOT USE DAMAGE OR DEFECTIVE PARTS/HARDWARE.
- CONTACT ETHNICRAFT FOR ANY MISSING PART AND /OR HARDWARE.



- READ THE ASSEMBLY INSTRUCTION BEFORE INSTALLATION AND CAREFULLY FOLLOW THE INSTRUCTION GIVEN.
- SEEK THE ADVICE OF A PROFESSIONAL IF YOU ARE NOT FAMILIAR WITH THESE INSTALLATIONS OR HAVE ANY DOUBTS ABOUT THE SAFETY OF THIS INSTALLATION.



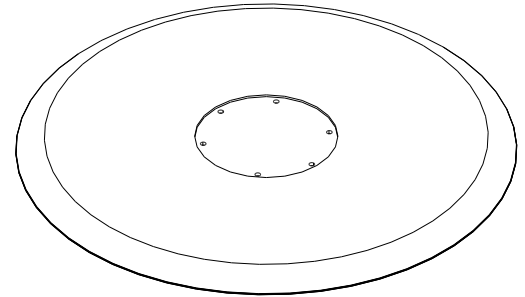
- IT IS ADVISABLE TO DO THIS ASSEMBLY WITH MINIMUM OF 2 PERSONS.



C LEG BASE 1piece

| CODE | DESCRIPTION |
|-------|------------------|
| P4668 | LEG BASE - BLACK |
| P4670 | LEG BASE |

PARTS TO ASSEMBLE



A TABLE TOP 1piece

| CODE | DESCRIPTION |
|-------|-------------------|
| P4666 | TABLE TOP - BLACK |
| P4669 | TABLE TOP |



B CENTER LEG 1piece

| CODE | DESCRIPTION |
|-------|--------------------------------|
| P4667 | CENTER LEG - BLACK (HEIGHT 76) |
| P4572 | CENTER LEG (HEIGHT 76) |
| P5010 | CENTER LEG (HEIGHT 69) |
| P5012 | CENTER LEG - BLACK (HEIGHT 69) |

HARDWARE (Attached to Leg Base)

| | |
|--|---|
| <p>H0785 Metal Plate (Small) (1pc)</p> | <p>H0784 Metal Plate (Large) (1pc)</p> |
| <p>H0882 COUNTERSUNK ALLEN SCREW M8x50 (3pcs)</p> | |

HARDWARE ENCLOSED

| |
|--|
| <p>H0842 COUNTERSUNK ALLEN SCREW M8x16 (9pcs)</p> |
|--|

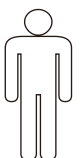
TOOL (Included in package)

| |
|---|
| <p>H0880 L KEY (1pc)</p> |
|---|

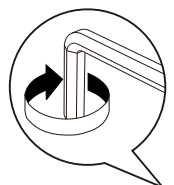
SYMBOLS



DIRECTION


NUMBER OF
PERSONS NEEDED


USE HAND

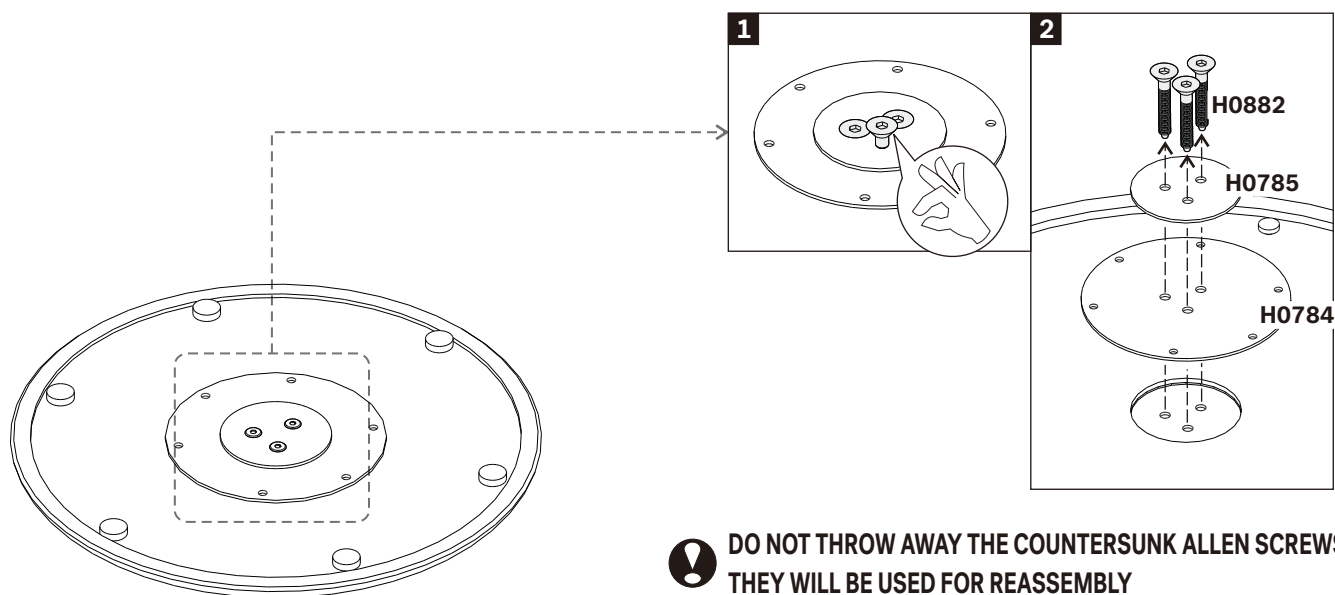

USE L KEY
TO TIGHTEN

OAK TORSION DINING TABLE Ø70

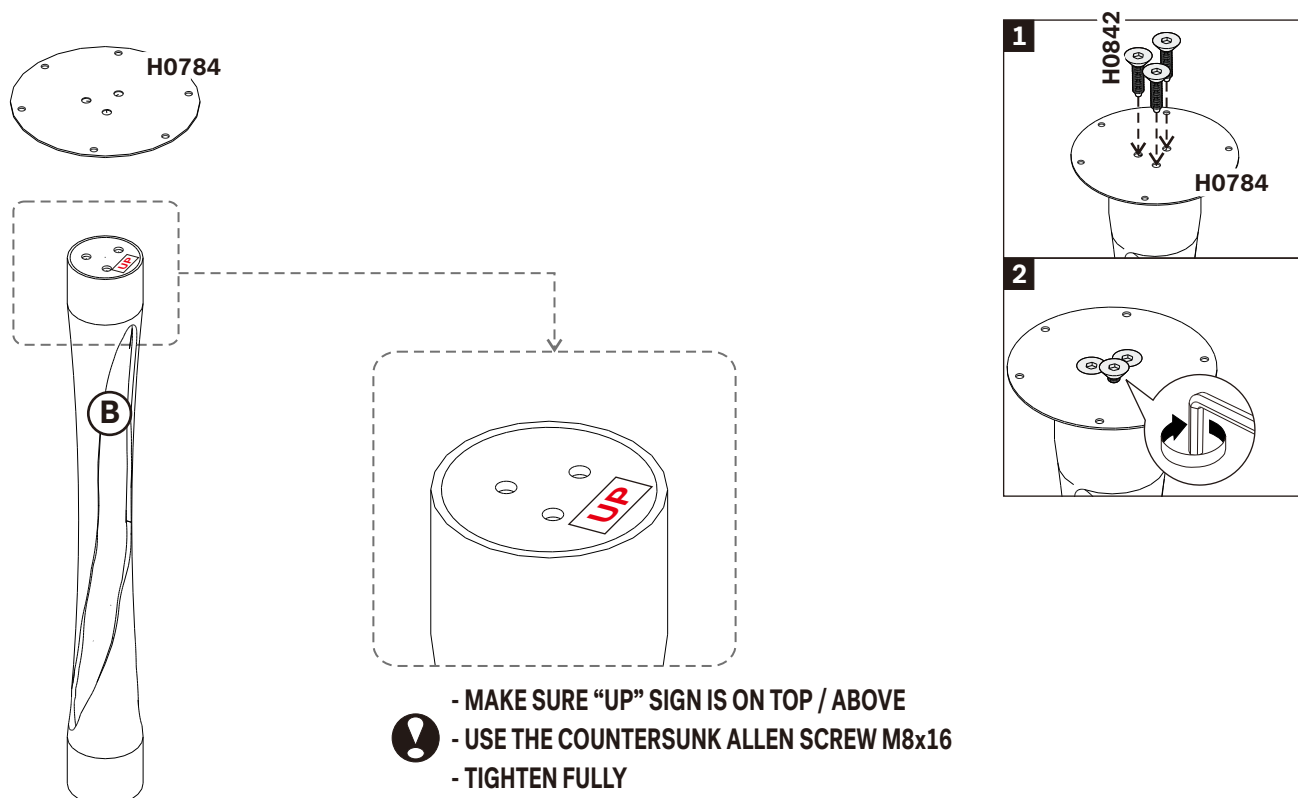
ASSEMBLY INSTRUCTIONS FOR DINING TABLE INSTALLATION



A. DISMANTLING METAL PLATE & SCREWS FROM LEG BASE



B. INSTALLING METAL PLATE (LARGE) TO THE CENTER LEG

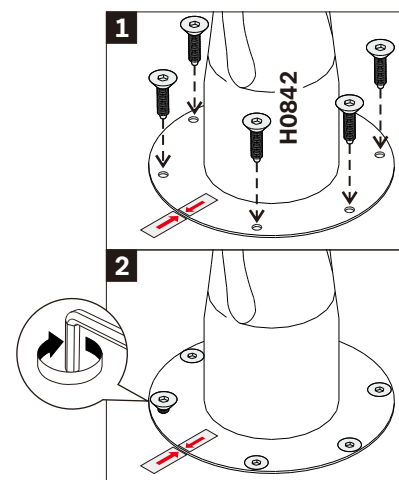
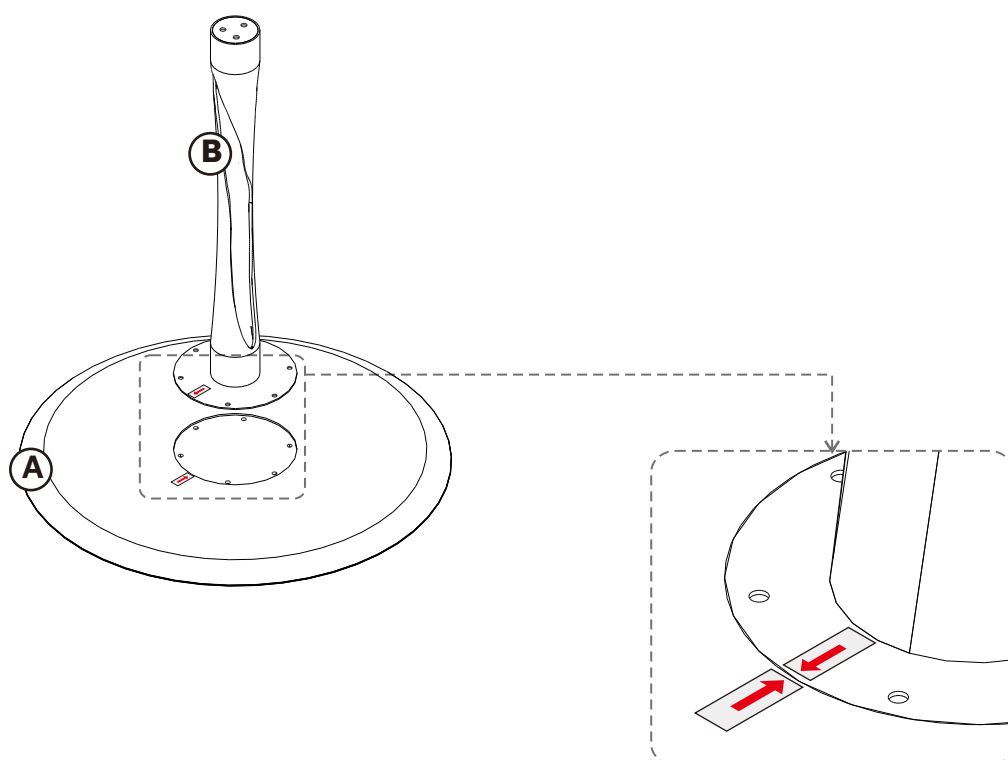


OAK TORSION DINING TABLE Ø70

ASSEMBLY INSTRUCTIONS FOR DINING TABLE INSTALLATION

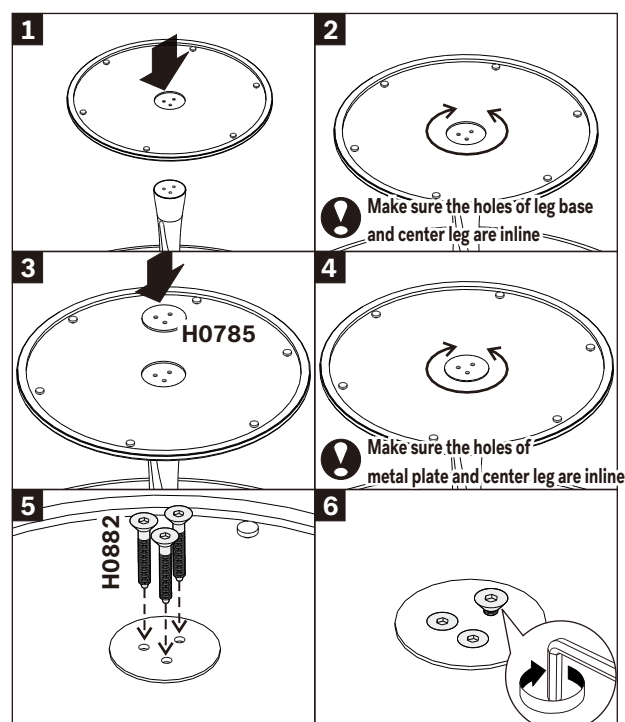
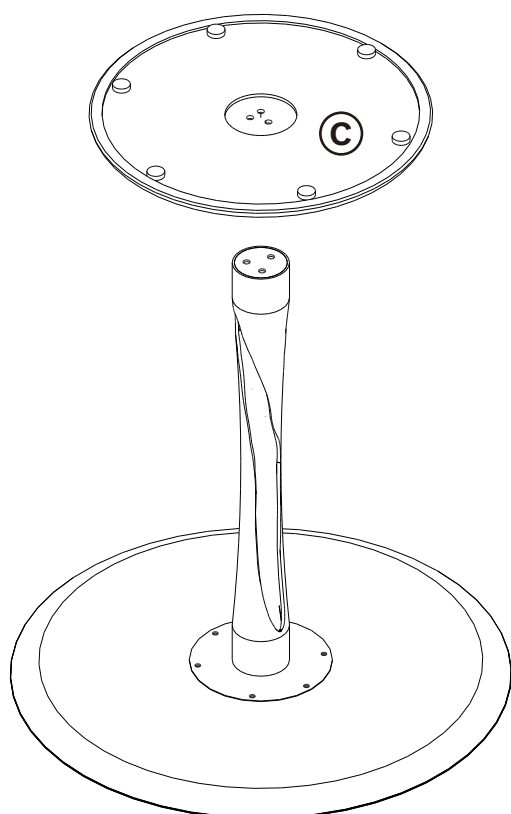


C. INSTALLING CENTER LEG TO TABLE TOP



- ALWAYS REFER TO STICKER
- ! - USE COUNTERSUNK ALLEN SCREW M8x16
- TIGHTEN FULLY

D. INSTALLING LEG BASE



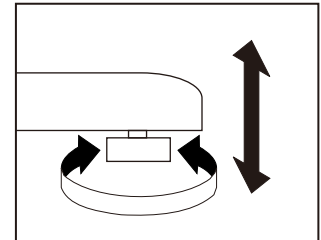
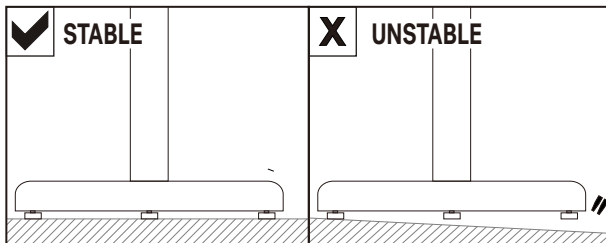
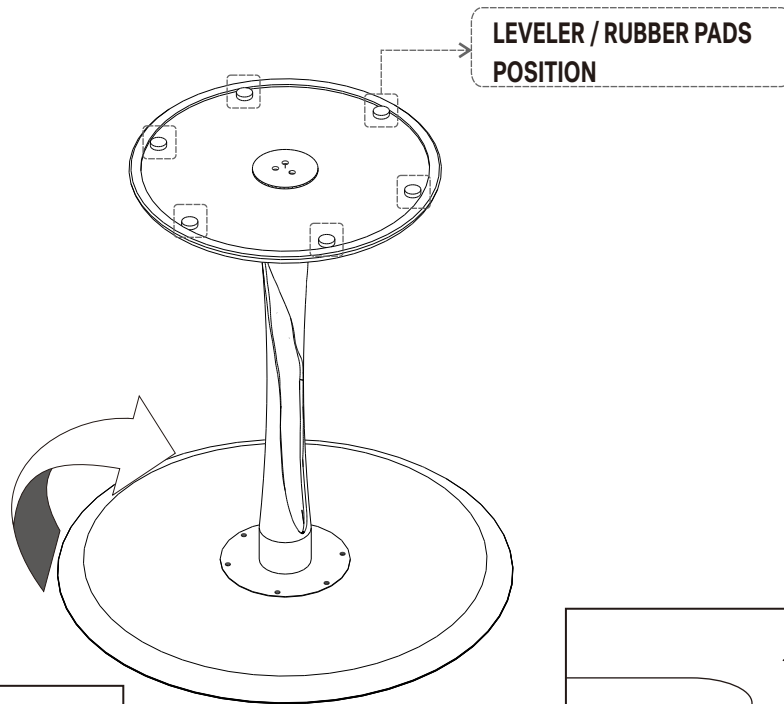
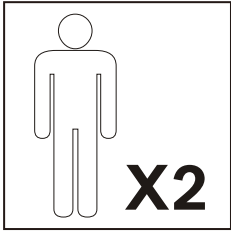
- ! - USE COUNTERSUNK ALLEN SCREW M8x50
- TIGHTEN FULLY

OAK TORSION DINING TABLE Ø70

ASSEMBLY INSTRUCTIONS FOR DINING TABLE INSTALLATION



E. ADJUSTING RUBBER PAD



NOTE :
THIS IS A COMPULSORY ACTION TO MAKE SURE
ALL OF THE RUBBER PADS TOUCH THE GROUND!

F. FINISH

