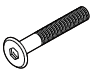






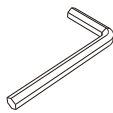
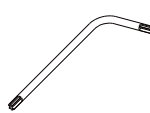
## BOK OUTDOOR EXTENDABLE DINING TABLE ASSEMBLY INSTRUCTIONS FOR DINING TABLE INSTALLATION





### HARDWARE ENCLOSED

 JCBC SCREW M8x40 (6pcs)	 SPAX SCREW M6x100 (4pcs)	 SPAX SCREW M6x120 (4pcs)
 SPRING WASHER M8x15 (14pcs)	 WASHER M8x23 (14pcs)	

### TOOLS ENCLOSED

 ALLEN KEY	 TORX ALLEN KEY
--	--

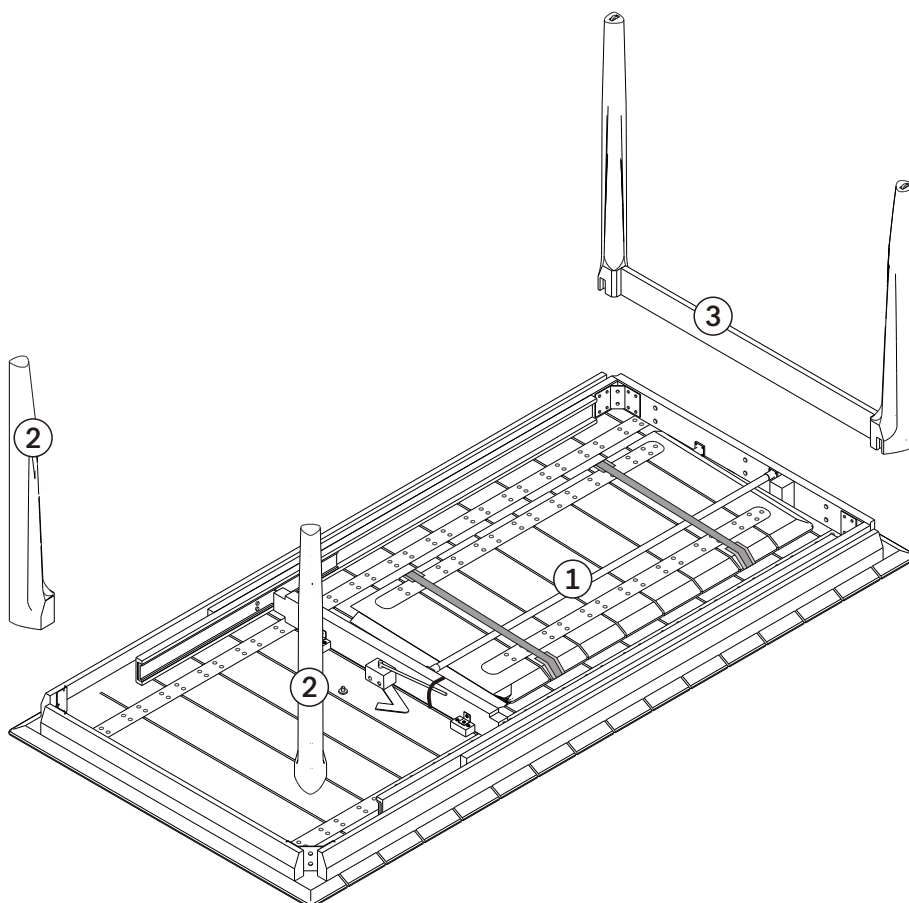
### TOOLS REQUIRED (Not included in this package)

 PHILLIPS SCREWDRIVER	 SCISSORS
--	---

### IN YOUR PACKAGE: ASSEMBLY INSTRUCTIONS HARDWARE (AS LISTED ABOVE)

#### PARTS TO BE INSTALLED

1. TOP PANEL 1pc
2. LEGS 2pcs
3. LEG SET 1pc



### RECOMMENDATION:



To minimize colour differences between the fixed and extension table tops, it is recommended to keep the table in the extended position for the first month.

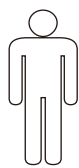
Ensure regular extending thereafter.

Please note, exposure to UV light will naturally alter the colour of teak.

### SYMBOLS



DIRECTION



NUMBER OF  
PERSON NEEDED



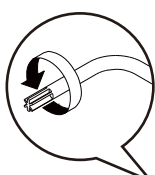
USE HAND



USE PHILLIPS  
SCREWDRIVER  
TO TIGHTEN

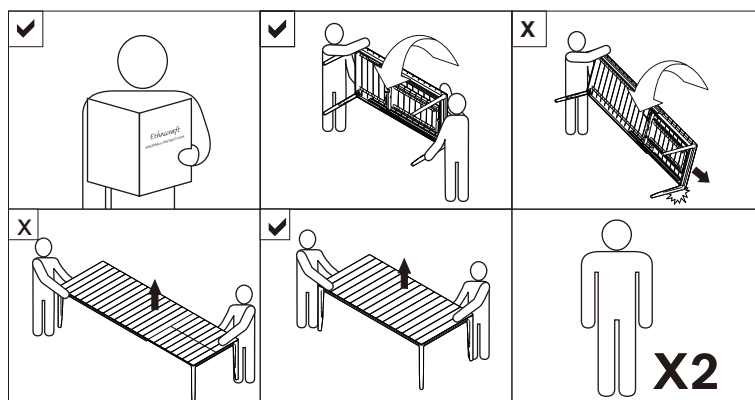


USE ALLEN KEY  
TO TIGHTEN



USE TORX ALLEN  
KEY TO TIGHTEN

### NOTICE

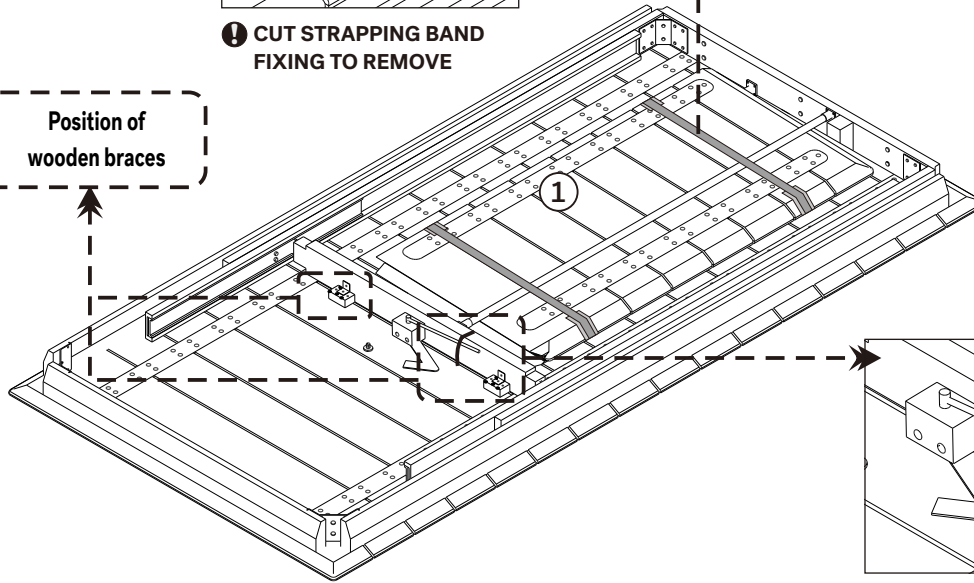


#### WHEN LIFTING THE TABLE :

- LIFT ONLY ON THE APRON
- MAKE SURE TABLE IS IN UNEXTENDED POSITION

A technical diagram showing a pair of scissors cutting a cable. The cable is shown in a cross-section, and the scissors are positioned to cut it. The diagram is labeled with a circled 'X' and the text 'Remove old cable'.

**Position of  
wooden braces**



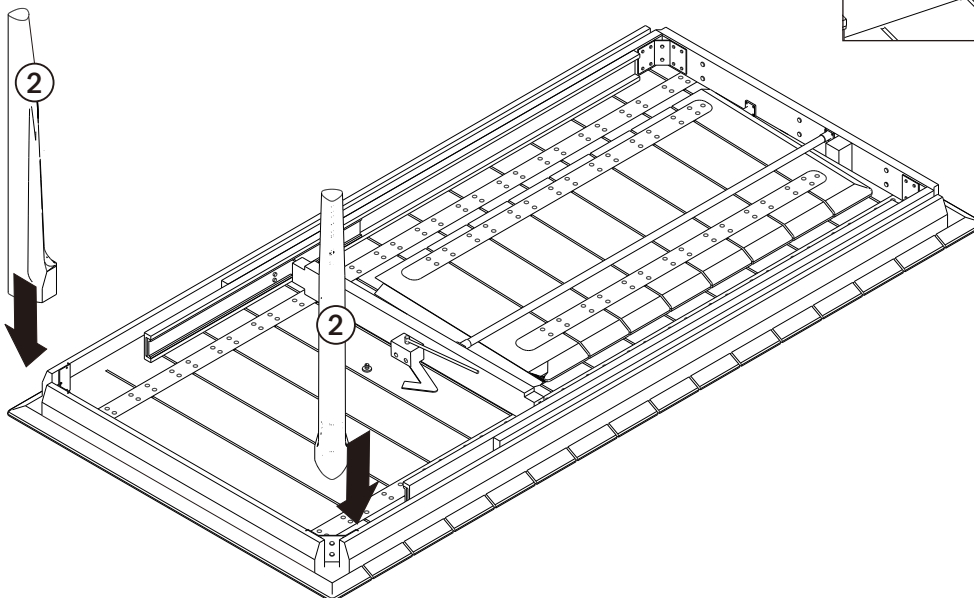
**1**

**2**

**3**

**REMOVE WOODEN BRACES**

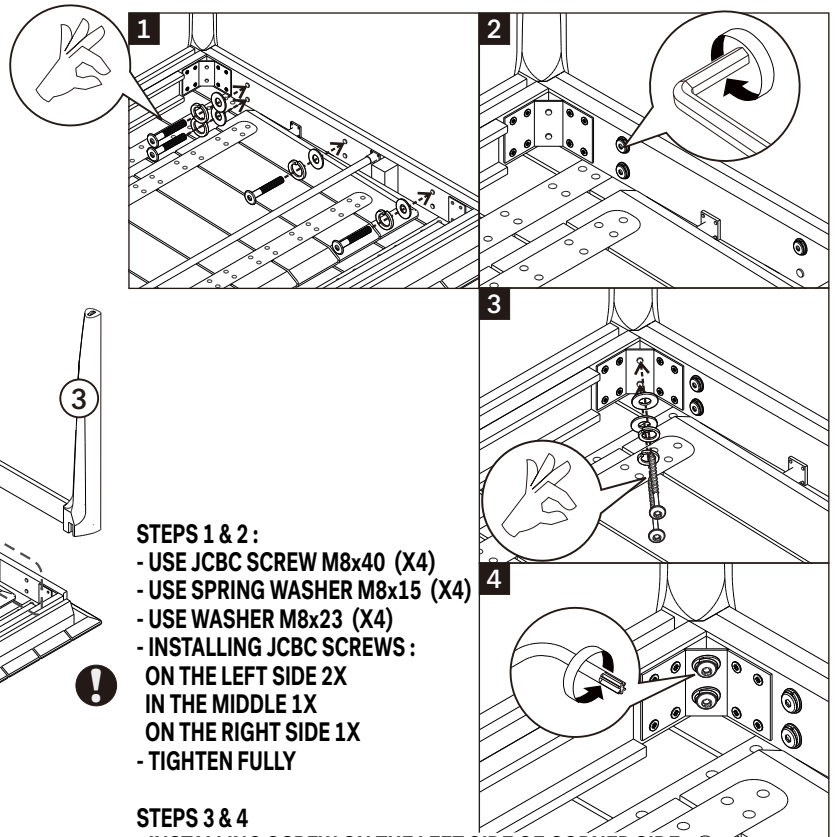
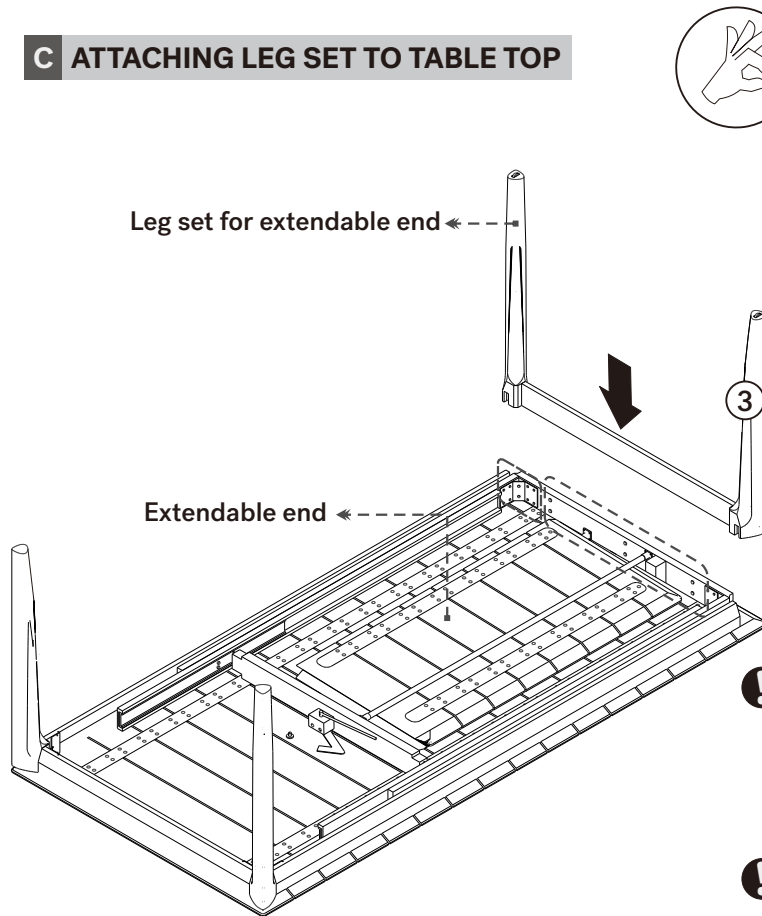
- USE SPAX SCREW M6x100 (X4)
- USE SPRING WASHER M8x15 (X4)
- USE WASHER M8x23 (X4)
- TIGHTEN FULLY



## BOK OUTDOOR EXTENDABLE DINING TABLE ASSEMBLY INSTRUCTIONS FOR DINING TABLE INSTALLATION



### C ATTACHING LEG SET TO TABLE TOP



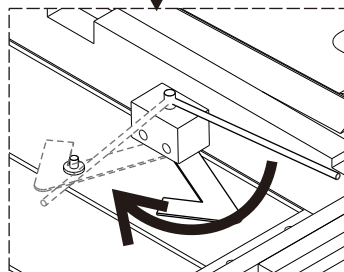
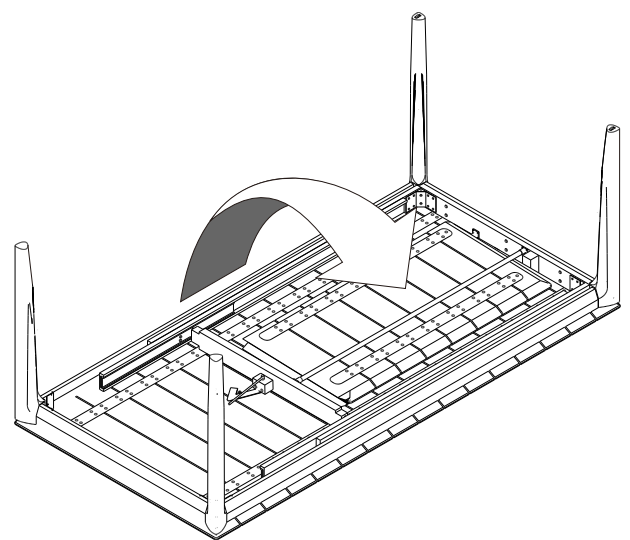
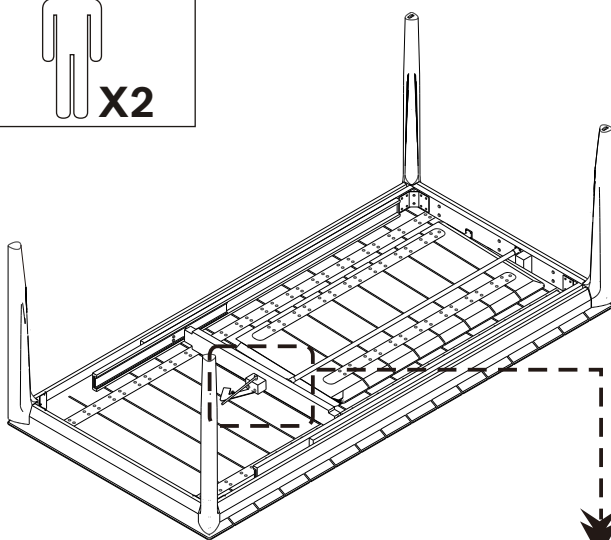
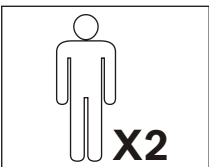
#### STEPS 1 & 2:

- USE JCBC SCREW M8x40 (X4)
- USE SPRING WASHER M8x15 (X4)
- USE WASHER M8x23 (X4)
- INSTALLING JCBC SCREWS :  
ON THE LEFT SIDE 2X  
IN THE MIDDLE 1X  
ON THE RIGHT SIDE 1X
- TIGHTEN FULLY

#### STEPS 3 & 4

- INSTALLING SCREW ON THE LEFT SIDE OF CORNER SIDE
- USE SPAX SCREW M6x120 (X2)
- USE SPRING WASHER M8x15 (X2)
- USE WASHER M8x23 (X2)
- TIGHTEN FULLY

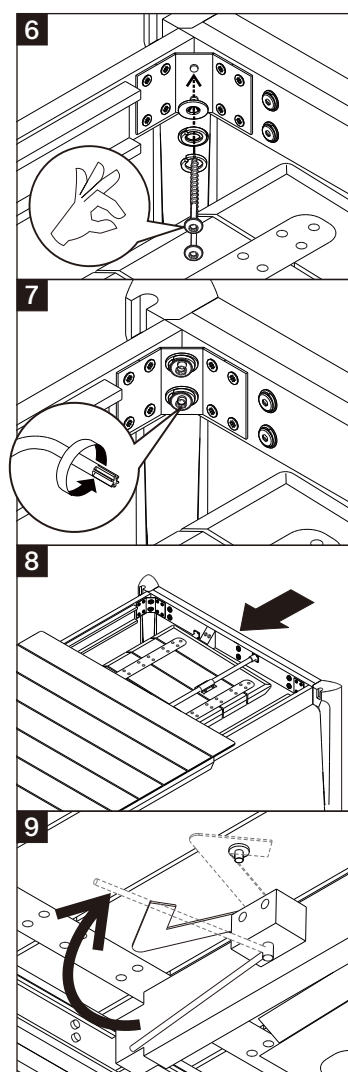
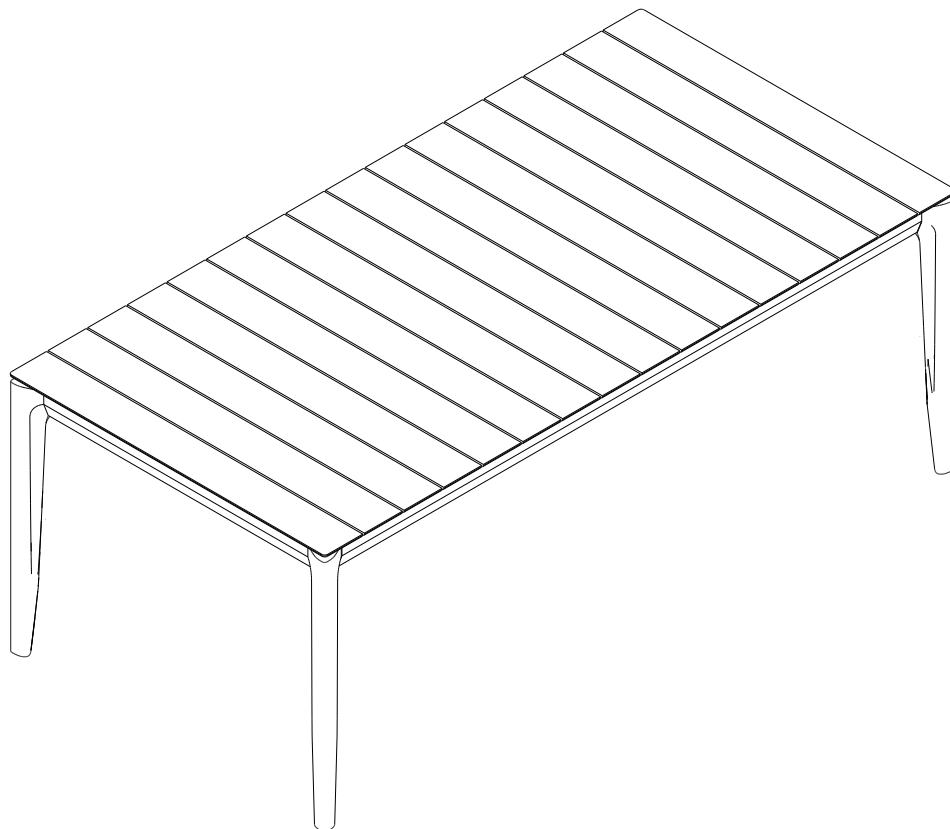
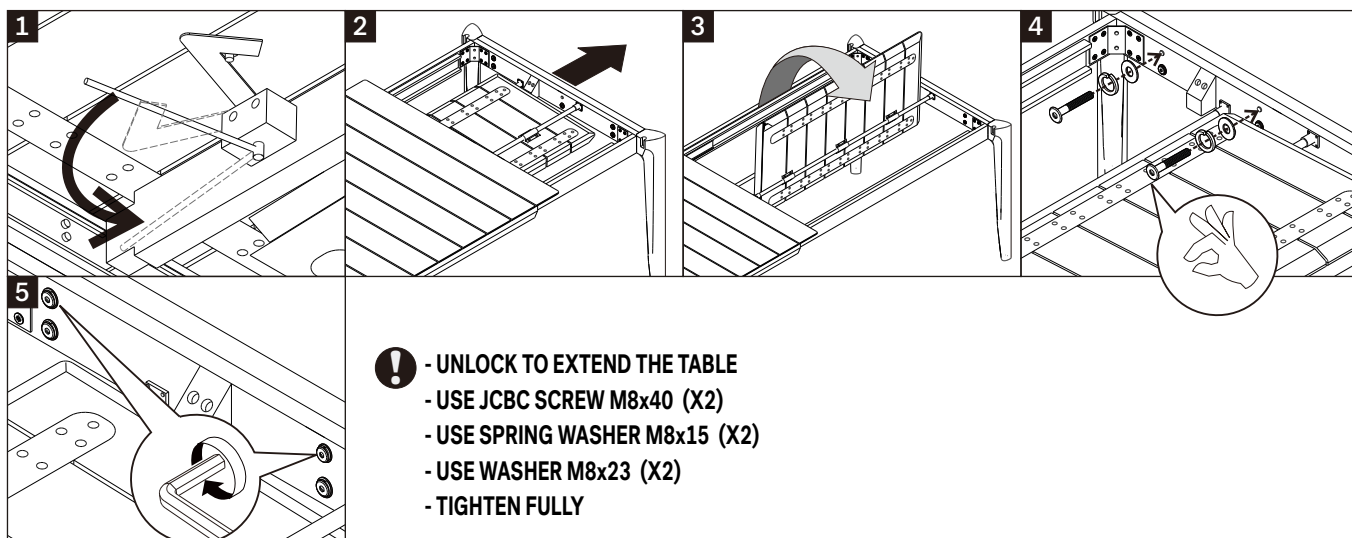
### D LOCK THE TABLE TOP



## BOK OUTDOOR EXTENDABLE DINING TABLE ASSEMBLY INSTRUCTIONS FOR DINING TABLE INSTALLATION



### E INSTALLING CENTRAL SCREWS TO INSIDE OF LEG SET

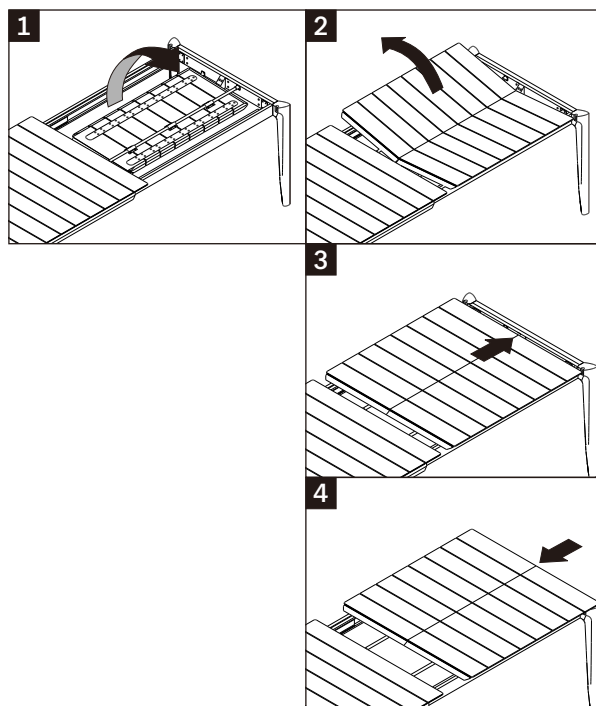
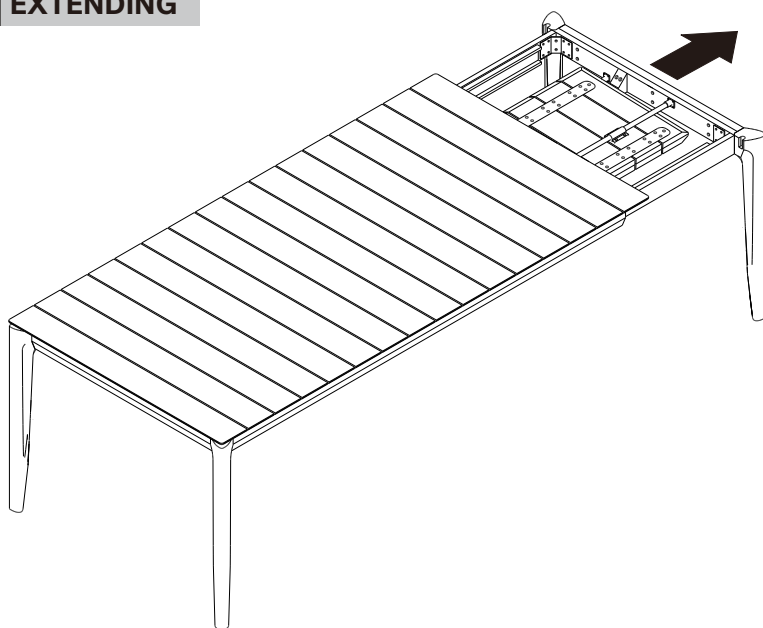


- !** - USE SPAX SCREW M6x120 (X2)  
- USE SPRING WASHER M8x15 (X2)  
- USE WASHER M8x23 (X2)  
- TIGHTEN FULLY

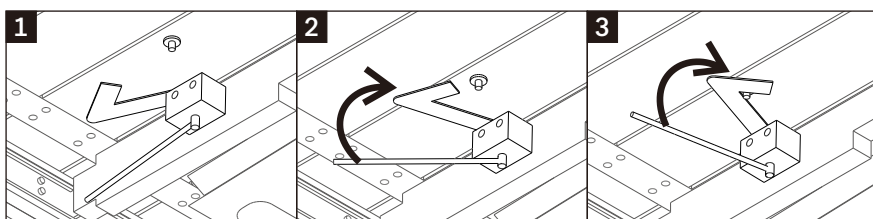
## BOK OUTDOOR EXTENDABLE DINING TABLE ASSEMBLY INSTRUCTIONS FOR DINING TABLE INSTALLATION



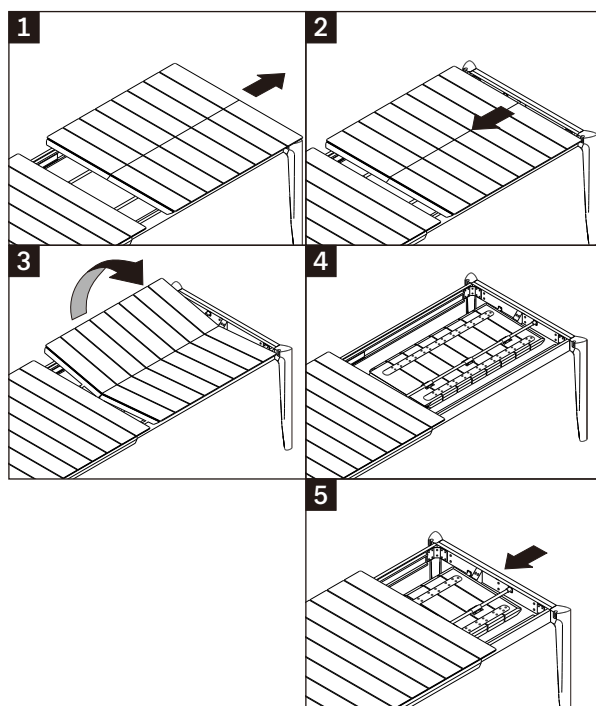
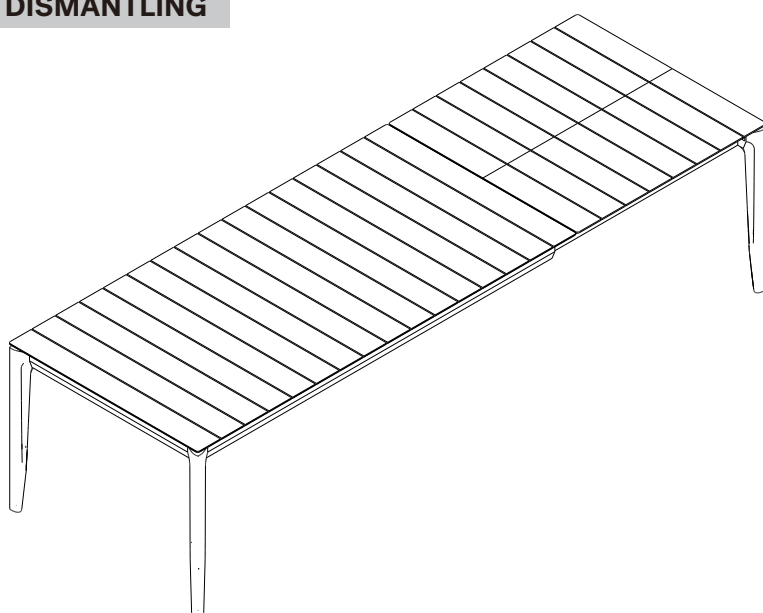
### F EXTENDING



NOTE : AFTER EXTENDING, LOCK IN PLACE ON UNDERSIDE OF TABLE TOP



### D DISMANTLING



NOTE : BEFORE DISMANTLING, UNLOCK ON UNDERSIDE OF TABLE

